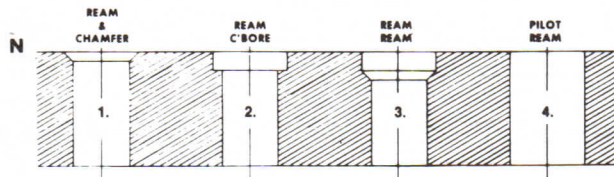
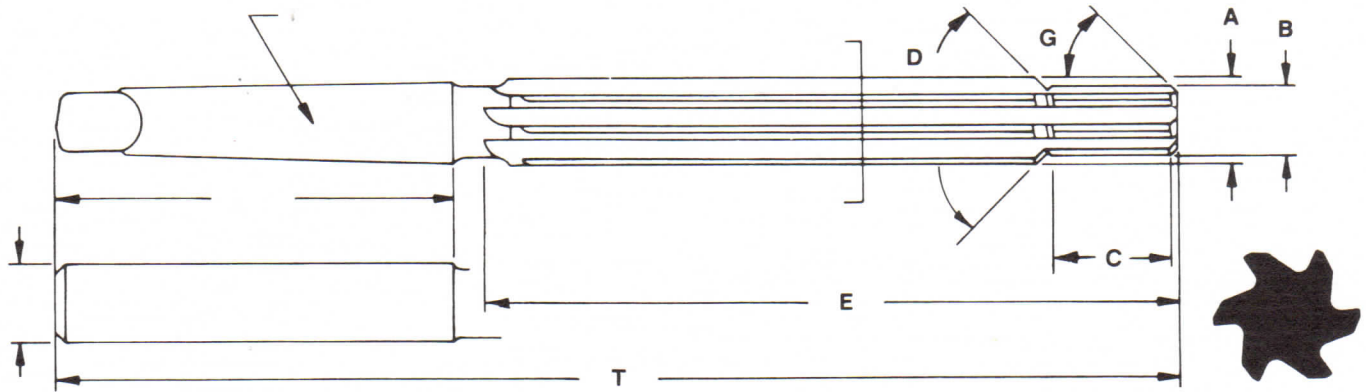


# HARTLAND CUTTING TOOLS INC.

240 Jandus Road, P.O. Box 517  
Cary, Illinois 60013  
847/639-9400 Facsimile # 847/639-7555

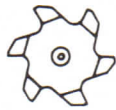
## STEP REAMERS



### END CUTTING STYLE



NO. 1  
STANDARD LEAD  
CHAMFER  
80% OF DIA.



NO. 2  
END CUTTING TO  
FLUTE DEPTH



NO. 3  
END CUTTING TO  
CENTER HOLE



NO. 4  
FULLY  
END CUTTING

### REQUIRED SPECIFICATIONS

A= \_\_\_\_\_ Large Diameter  
B= \_\_\_\_\_ Small Diameter  
C= \_\_\_\_\_ Step Length  
D= \_\_\_\_\_ Step Angle  
M= \_\_\_\_\_ Material to be Cut  
N= \_\_\_\_\_ Hole Style Number (& Depth)  
O= \_\_\_\_\_ Bushing Used (Yes/No)  
E= \_\_\_\_\_ Flute Length  
F= \_\_\_\_\_ Spiral  
G= \_\_\_\_\_ Lead Angle  
K= \_\_\_\_\_ End Cutting Style  
L= \_\_\_\_\_ Flutes (Number)  
Straight Flute  L.H. Cut  
R.H. Spiral  R.H. Cut  
L.H. Spiral   
T= \_\_\_\_\_ Overall Length  
\_\_\_\_\_ Surface Finish

ORDER  P.O. # \_\_\_\_\_

QUOTE  INQUIRY # \_\_\_\_\_

QUANTITIES \_\_\_\_\_

DISTRIBUTOR \_\_\_\_\_

CUSTOMER \_\_\_\_\_